

Quarterly newsletter for Association members

Lavender Link

THE NEW ZEALAND LAVENDER GROWERS ASSOCIATION

Issue 72 : Winter 2019



Photo courtesy Chris & Gabi Dawson-Two Ridges

Contents

Chairman's Chatter	page 2	Acre Farm	page 8
From the Editor	page 4	Talga	page 9
AGM	page 5	Two Ridges Botanicals	page 10
News from the Regions		Lavender Belle	page 11
Finding Lavender	page 6	Library News	page 12
Leafy Hollow Lavender	page 7	Directory	page 14
Oil Awards Judges Training Weekend	page 8		



Chairman's Chatter

To research, develop and promote lavender essential oil and associated products of the highest quality

From the Chair July 2019

In the last Link I really enjoyed reading Roger's story and transition from building a replica WWII German fighter plane to building a French style mansion and growing Lavender. That is quite a transformation so the pull of lavender is obviously very strong. I guess for many of us Lavender does become a passion and hard to let go, as if we would want to anyway.

It has been a very busy time for Margaret and I with the renovation of our Auckland home and the rebuilding of our Great Barrier Island home where our Lavender patch is. This unfortunately has meant that my original visions mentioned in the previous Link for the Quality standard and Quality Mark has not been completed. Work on this will continue with the incoming executive but I also intend to table the project at the AGM for members input, if this is something the members see will add value to their businesses. The other projects mentioned are work in progress with Pauline adding pictures to the Plant data base and the Oil Bank has been incorporated into the Website redevelopment program.

A new development has been to look at ways we can further the research of lavender oil which was one of the original founding goals of our association. We also want to make it more affordable for members to carry out GC testing of their oils. It is practically important for the exporting of oils and for the local market to know the exact composition of your oil to enable certification as being true to the variety type and also give the purchaser information about the oil components which they may be looking for.

Some of the research projects we could be looking at are the storage of oils and how they change over time. Aligning GC analysis to the award winning oils to see if a relationship of the analysis can be made to the Judges evaluations and to look at the Oil

components that define an oil type and their value.

These projects and others would be designed to enhance the value of NZ produced oils from our members.

To achieve this the executive has been looking to purchase our own Gas Chromatography instrument (GC). To this end we have identified a second-hand GC and auto-sampler about 5 to 6 years old but still the current model. The purchase, installation and setting up we estimate will cost about \$10,000 of which \$7,000 will come from our funds marked for research. We have also identified a laboratory in Otaki that appears to be a very good fit to meet our research objective. The executive are unanimous in their support for this subject to satisfactory agreement details with the lab but will also put it to the members for their input and sign off at our upcoming AGM.

Websites need to continually evolve to maintain relevance to their target audience and for our members. A subcommittee has been established and is currently in the final stages of recommending a solution to the executive. Some of the objectives are to include online payments via credit card for conferences, oil awards and subscriptions etc. in addition to the current internet banking option. To enhance communication to our members directly from our members list for notices and subscription renewals etc. and if any new information is posted on the website. Also we are looking to enhance our member database to enable members to directly update their Lavender trail profiles and to post Lavender oil for sale directly to the Oil bank. We are also looking at ways for our supplier members to advertise their services.



It was very pleasing to see nine of our members attend the Talga conference at Port Arthur, Tasmania last March. It was a very enjoyable and informative conference. After the usual opening by the local mayor and dignitaries Prof Hamish Stewart-Maxwell gave a talk on the early days of Port Arthur through the convicts that were transported from England in the early 1800's and how they moved through a prison system that rewarded good behavior and punished bad behavior. Many convicts oscillated between the two extremes but with many exiting from their time with useful skills and settled in Tasmania making into what you see today. This was followed by the History of Lavender in Australia from first plantings to present day by the Fiona Glover. I think this perhaps provoked a bit of inter Tasman rivalry on which country actually planted the first lavender but there is no disputing the work of CK Denny who in the 1920's established Bridestowe which today is the largest privately own lavender farm in the world.

We had a very informative presentation presented by Clive Larkman on plant nutrition and the importance of calcium which is very relevant to NZ. Clive also filled in for Angus Stewart who could not make it with Angus's current research in plant propagation with particular emphasis on essential oils in Australia. Clive being an expert in propagation was well qualified to give Angus's presentation and I know we all found it very informative. This was followed by a new grower's story by Thomas Mahar of Hahndorf Lavender and how he made innovative machinery to help form and plant the Lavender rows. I always find stories from new growers and how they go about the challenges of setting up their lavender farms very informative and interesting. After lunch we had various workshops one of them being oil distillation presented by our very own Keith Brown.

The gala dinner was at Port Arthur Lavender owned by Clare and Brendan Dean. Their story in how they setup the Café and shop was very inspiring. The food was a credit to Calare's high standards and quality. The evening was very entertaining with a short film documentary as seen on Australian Story "Doing it Scared" presented by Catherine Pettman. This was a story about Paul Pritchard who re-climbed the Totem

Pole many years after he had suffered a terrible head injury from a rock fall during his first attempt to climb it. This story was very close to my heart from my early days of rock climbing and was made even more poignant with Jan Abernethy buying Paul's book on his recovery from the Totem pole incident and giving it to me at the dinner. It is an amazing story of courage and determination. Thank you Jan.

On Friday we had a coach tour visiting Clare and Brendan Dean's lavender farm followed by a demonstration and talk on lavender cleaning practices at Wattle Hill farm where they use machinery originally setup to extract seeds. From here we visited a gin distillery for lunch and then onto Lufra where renowned author Sally Wise gave a talk on her journey to become a bestselling author and the use of herbs including lavender in food. We returned to Clare and Brendan's Port Arthur Café for a scrumptious afternoon tea and farewells.

On the Sunday most of us drove to Bridestowe Lavender for Lunch and a tour of their farm and distillery. Many thanks to Talga, Clare and Brendan Dean in hosting a very enjoyable conference.

Important Upcoming dates

27th July Close off dates for the Oil Awards entry

2nd – 4th August Oil Awards judging

26th July AGM Remits to secretary

31st August AGM 9am to 3pm, Brentwood Hotel, Wellington

28th – 30th August 2020 NZLGA Conference and AGM to be held in Nelson

All the best

Peter Jemmett

NZLGA Chairperson



From the Editor

Hello everyone, its been too long and the fault is all mine!

Three years ago we decided (possibly foolishly) that we would buy a property in the Wairarapa, a good reason being that the climate was very good for growing lavender, proximity to vineyards, olive groves, lifestyle etc.

Our long term plan to take the knowledge gleaned from growing lavender up north and apply it to the much better conditions down south.

Jobs and university aged children required us to be in the North for longer than anticipated and planning the move south had ground to a halt. When would be the best time to move? Should we transplant our lavender patch? Will our children survive with out us? Duh! Yes!

Last December that all changed suddenly. Tony got a job in Masterton.

The plan is now taking shape much more quickly than anticipated and off he goes to start work in early 2019.

Meanwhile my job is still in Auckland with the said children (now grown, finished their studies and fled the nest)

So we have Tony in Masterton and me in Auckland. Our plants have been pulled up, some went to happy homes elsewhere. Some to our garden in Masterton.

He has the computer, which has stopped working (long story, very boring) and I am left to pack up the last decade of our life.

With each of us at opposite ends of the island and limited internet access I have not managed to assemble a Link until now.

All of my templates and photos have been lost and I have cobbled this one together with screenshots.

I hope you like the refreshed Lavender Link and enjoy reading about what every one has been up to in the last few months.

Cheers Helen

Proof of life-Transplanted Pacific Blue-
from our Auckland patch



Advertising in the Link is free to full members

Rates for NZLGA Associate Members:

Full Page-\$44.00

Half page-\$27.00

1/4 page-\$17.50

1/8 page-\$13.00

Rates for non-members:

Full page-\$88.00

Half page- \$54.00

1/4 page-\$34.00

1/8 page-\$26.00

You will be invoiced once your ad appears.

Please make sure you include your contact details, and email the ad to:

Helen Mason -helen_am61@hotmail.com



NOTICE OF ANNUAL GENERAL MEETING AND BUSINESS

Notice is hereby given that the Annual General Meeting of members of the New Zealand Lavender Growers' Association Inc to be held at

**Brentwood Hotel,
16 Kemp Street, Kilbirnie, Wellington**

on

Saturday 31st August 2019 commencing 9:00am

AGM BUSINESS

1. **Attendees**
2. **Apologies and Proxy votes**
3. **Minutes of previous Annual General meeting held on Saturday 2nd Sept 2017**
4. **Annual Report** (*to adopt the Annual Report*)
5. **Financial Statements** (*to adopt the financial statements for the year ending 30th June 2019*)
6. **Appointment of Auditor** (*to appoint a reviewer*)
7. **Subscriptions**
8. **Election of Officers/ Executive Committee**
9. **General Business** (*all general business to be submitted by remit*)
 - a) Remits
 - b) Purchase of a Gas Chromatography (GC) instrument for the purpose of carrying out research on Lavender and the analysis of members Oils.
 - c) Open discussion on what members would like to see from the association.

Conclusion of AGM

This notice of Annual General Meeting and the Business set out above has been drawn up in accordance with the Rules of the Association as they stand as at the date of this Notice.

10. **Presentation on food safety with Lavender**
11. **Oil Competition awards (to be held after Lunch)**

A full Agenda and Explanatory Notes will be issued nearer to the date of the meeting.

CALL FOR REMITS

Any items for General business (remits) can be lodged in writing (or by email) to the AGM Secretary, Pauline at

Email: nzlg-membership@lavender.org.nz

Post: 66 Duff Rd, RD2, Waiuku 2682



Finding Lavender

Time passes and for all of us we watch, bi-focals on, as the deleterious effects of age take our lush flesh and foliage into the years of autumn. Somehow both seem to have happened to me and the lavender crop... then a chance question from my GP led me to understand that what made me fit and to a degree healthy was the activity of running the farm, garden and.. the lavender crop.

The crop was still there among the couch grass, weeds and lawn but it was a mere shadow of its previous glory of feature and fragrance so in the light of the knowledge that the two of us could continue to get along together I decided to rejuvenate the crop and continue the whisky; certainly the lavender was the easiest component of the relationship to reinvent and at least some of it could be performed from the driving seat of the tractor.

The first stage was to take a look at the layout and Uncle Google provided a nice overhead perspective wherein I could plainly see some misalignment. Then in an action that both cleared away old rows along with the weeds while vastly claiming my rightful share of a carbon footprint... (I love the smell of that stuff and....it makes the trees grow!) I attached one end of a weed mat row to the drawbar and drove-off back down the row rolling the mat over itself all the while extracting redundant plants, weeds, mice, crickets and grass. A few reverse applications of the process and much of the weed, so extracted, was scattered across the lawn ready for consumption by reduction by burning (Free pot-ash if you are smart).. and the trees grow more!

I have for long, held the concept in my wish list of an adapted rotary hoe for forming rows and ridges but with the GP's words still ringing in my ears I set-off with the grubber, shovel, spade and trenching shovel to remove remaining weed stock, form deep trenches either side of the row and build a "ridge and farrow" system as employed by earlier civilisations of the Middle Ages (yes.. I watch Time Team). This would I figured, provide for effective morning and evening heating for the rows when the sun shone its few meagre hours under the dense cloud base of the imminent ice age which races now toward us. But mostly it was to provide ditches into which I could tail the sides of the weed mat by rolling sand into the salvage

before burying it in even more sand. This is a great method as it provides for a continuous lock and as with the weight of the human foot, tractor tyre and the wet sand itself the mat is tightened and all without the holes otherwise committed by the peg methods. Don't for a minute believe that the sand slows the weeds it does not but way down there below the plant the sand can be safely sprayed for weed control. The rabbits don't appear to like the mat either which reduces further little holes potentially of .22 calibre

Of course, with the forethought common to country boys of my ilk, I had propagated cuttings from the old stock, stripping the last notion of dignity from the old stuff at the last gasp. I laid-out the plant locations with a pink test pot and a 400mm long stick before burning holes somewhat successfully before, by the use of a square-profiled spike for both a perfectly dimensioned opening in the mat and similarly, depression for the root stock straight from the punnett. Then it was "plant away"! Some of the need to bend was negated by the height of the mound but it did mean persistent working joy with legs apart which was all new to me. Despite my best labours not all plants were happy about this so some early attrition was experienced. However, tucked down in their respective voids the smallest of these hold fair chance of prospering come spring. I sit and I watch and I wait now as...well Andy did (For the Australians!) but in the full and certain knowledge that the devil makes work for idle hands, I continue on and my crop circles advance arc by arc week by week ad nauseum.

How I look for to the soft sweet fragrance of the revitalised crop, the colour, the clarity of the oil it will produce and the slumber so soft and delicate from the calming attributes. The honey next year will be a true elixir of the gods, the bees so fat and yellow and all because of the tiniest instant of inspiration...No, just kidding.. the crop was rather old tired and ugly and, at least one of my 10 tractors needed a run and I need a test track for the harvester in planning! Actually...it is starting to look rather good again. Now Mike...about that boiler!

Roger Jordan



Winter Workshops at Leafy Hollow Lavender



sales. I had an idea!

During the course of the past year Robert converted part of his' Man Shed' into a Product Making workshop. It may have taken several years of dropping hints about needing a bigger workshop area to straightforward nagging on my part, but at last there is plenty of room for all my bottles, jars, lotions, potions, ribbons and recipes. The workshop is up and running!



made lunch.

Workshop #1,(repeated twice in May) featured Melt and Pour Soapmaking We also went foraging for plant material around the garden (rosemary, lemon myrtle and the last few lavender flowers). These were distilled in the small Alembic still to produce refreshing hydrosol!



Workshop #2 (repeated twice in June plus an extra session in July) Themes were Cold Process Soapmaking and making Beeswax Food Wraps.

Although this is a time for garden maintenance and development that can keep us busy 24/7 the winter months are usually a financial desert - no visiting tour groups and very few

There are more workshops planned for July and August on different topics. I am really enjoying this new venture; working with like-minded people, sharing ideas and overcoming challenges along the way. It has made me analyse everything I do. MSDS sheets and Batch Code forms are produced for each activity and I have become obsessed with cleanliness and hygiene.



The workshops have so far proved popular, with good feedback from participants. Most say that I should be charging more so further thought needs to go into this before the next round of workshops begin.

SAFETY DATA SHEET COLD PROCESS SOAP MAKING

Substance	Potential Hazards	Safe Handling	First Aid
Sodium Hydroxide/ Lye water	Skin contact, splashes, spillage, vapour fumes	Safety glasses, gloves, masks, Aprons, ventilated area, cover lye bowl	Eye bath, vinegar wash, fresh air
Coconut oil, Organic Palm oil, Olive oil	Burns from splashes, slipping on spilt oil	Safety glasses, gloves, aprons, heatproof gloves when moving hot pot, clean spills immediately	Cold water,
Essential oils	Reaction to skin contact	gloves	Cold water
Equipment			
Gas burner	Fumes, open flame, oils over-heating	Ventilated area Control heat	Fresh air Fire extinguisher
Hot pots	Burns	Use heatproof gloves	Cold water
Knives	cuts		Plasters

In an emergency call 111



Oil Awards Judges-Training Weekend

July 5th & 6th

It was a great pleasure to host this function at the Lavender Creek Farm, Te Horo.

Under the guidance of Noel Porter, the following trainees Tracy Voice, Jenny Holmes, Sandy Roxborough, Barbara-Lee Cook and Amanda Woodgate were expertly lectured trailed and tested.

With a huge overdose of lavender essences in their noses it was good to have everyone stay on the farm.

A very large thank you to Noel Porter as this is probably the only Lavender Association that has such a professional ability to assess the quality of our members oils and also give reassurance to our growers and distillers that we are excelling with our work.

Keep it up and make sure you all remember to enter the oil awards. Good luck and thank you to all those who took the time out to participate.

Susi and Vaughan White



A beautifully scented Bed and Breakfast [without the participants] after the show

Acre Farm

Well summer was a hot and dry one for us at Acre Farm in Cambridge. After a slow start we got onto planting our prepared paddock and lavender area with around 1700 plants. A mix of Grosso, Pacific Blue and Super.

With everything in the ground, it was worth taking the time to include drip lines in the mounds as it was particularly dry after planting. While we lost the expected few plants to start with, they all seem to have taken well and look ready and poised to burst into life for the 18/19 season, to the point that someone decided to hop the fence and steal half a dozen one night! Pulled straight from the ground. You do have to wonder some times.

We are looking forward to later in the year and while we have not committed to oil production this year, its hoped we will have the shed built, some more landscaping and side associated projects all sorted looking toward the 2-3 year window.

Damian & Kate-Acre Farm-Cambridge



Our special tool for making the nice round holes in the weed mat.



National Lavender Collection-Australia

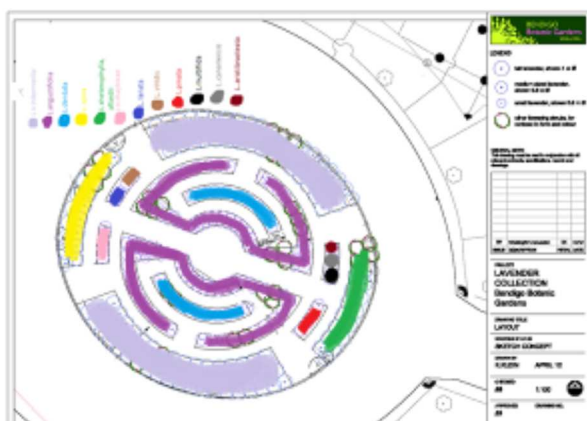
The *Lavandula* collection held at the Bendigo Botanic Gardens was started by Rosemary Holmes, and was handed to the Melbourne Botanic Gardens before finding its permanent home in Bendigo. The collection started with 78 varieties of lavender and has evolved now to hold 81 cultivars with new additions and some losses along the way.

As the collection has been in the ground for 6 years now, we are finding that we need to have a redesign of the Lavender collection area. Some of the plants are looking a little tired and with the new additions to the collection, we are trying to find appropriate areas to house some of them.

This coincides with the horrendous summer season we all had to endure, here in Bendigo we had 2 weeks of continuous weather above 35 degrees. This weather took a toll on some of the *angustifolia* cultivars which meant we lost a few from the collection. *L. angustifolia* 'Oka-Murasaki', 'Irene Doyle', 'Betty's Blue', 'Jean Davis', and 'Little Lottie' are the cultivars we have lost. Luckily these conditions had little effect on the *x intermedia*'s they are thriving.

Some of the new additions we have added to the collection are, *Lavandula angustifolia* 'Elegance Ice', 'Elegance Sky', 'Elegance Purple', 'Little Poppet', and 'Swampy'; *Lavandula x intermedia* 'Riverina Thomas', 'Riverina Alan', 'Asa Blue', and 'Blanche'; *Lavandula dentata* 'Frenchette' and *Lavandula x heterophylla* 'Antipodes'.

Our Current Lavender garden design



Our friends group continue to propagate the lavenders for us, to keep the replacement stock fresh and up to date. The excess stock the friends sell in their special plant sales day.

We have had the 'Plant Trust' visit the Bendigo Botanic Gardens to look at the *Lavandula* collection and the Canna Collection held on site.

We are always looking for cultivars that we don't currently hold, so please, if the Lavender Farms breed up new cultivars let us know. We would be extremely interested in getting more. You can never have enough lavender right?

Kirstie Paterson

Team-Leader Bendigo Botanic Gardens.



Two Ridges Botanicals and Distillery

2018/2019 Season Report

Hello everyone.

Sorry we have gone a bit quiet since the lavender conference. We have been pulled in several directions meaning we are very busy and only really have limited time to put into the business at the moment. However, what have we been up to in the past 18 months;

Gabi and I now have about 1500 lavender plants, mostly Grosso and Pacific Blue, with a few others. We are going to stay that way for the next 12 months at least.

This summer we were very excited to have undertaken our first lavender (and gum) distilling display where the clients come, pick, and distil the lavender or other botanical, and takes away the resulting product.

We provide lunch and a hands on experience. The day went very well and we intend to start making bookings for this coming summer.

Further to this we have also sold flowers to about half a dozen people for personal use, dinners and for a wedding.

Finally we have also produced a lavender honey for the first time (only from the 1500 plants so not fully lavender), however, the bees loved the plants and we extracted, I feel much more honey than usual as the lavender flower is quite long lasting.

The honey is selling well and we intend to get more hives over time.

Outside of Lavender and over the past season we have also planted 80 fejoa plants, 30 cherry trees, 10 blueberry and 50 boysenberry plants.

We still have heaps of available land and will continue to plant out. I will eventually plant a few more rows of lavender (of different varieties) around the property, but also other plants that can be used for tea, essential oil, and hydrosols, for which we will one day open a shop and start to sell.

Our place is still not much to look at so we are not really ready to open to the public other than those who come for displays or to pick flowers, but you are welcome to pop in for a coffee if you are passing Taupo.

The next 12 months will see;

More displays for distillation of essential oil and hydrosols;

- More lavender honey,
- More selling of fresh and dried lavender flowers and potpourri, including flower bouquets.
- More edibles planted

Chris Dawson

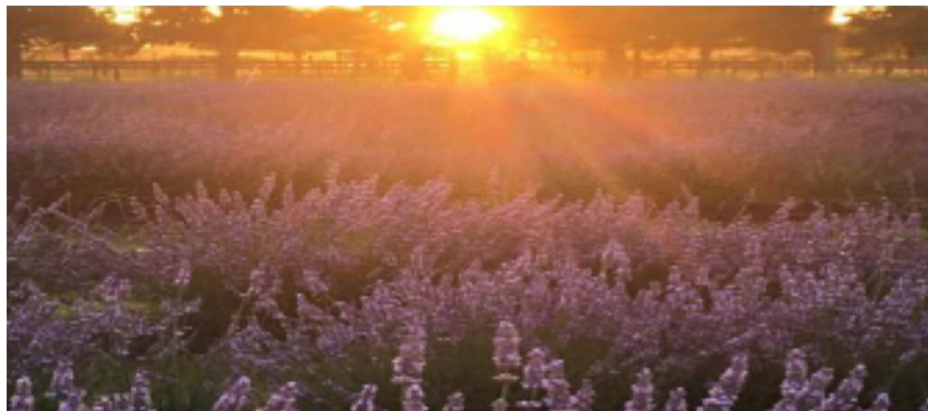




Lavender Belle

Lavender Belle went through a second harvest and instead of a car load like the first harvest, it ended becoming a trailer load up to Jason &

Beautiful sunsets



This weekend I am off down to Wellington to a Lavender Oil Sniffing Workshop that could prove very interesting learning how to detect the different notes within the Lavender oils. Lets hope my nostrils are up to it.

Meanwhile at this moment our pruned Lavender are looking like small round shrubs starting to come into new life, soon to be in full bloom again.

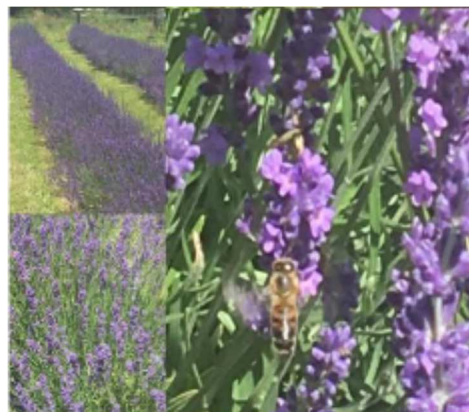
Trish of Lavender Hill for distilling as there was so much more, we ended up with another very high yield and some great smelling Lavender oil from our Grosso, Super and Pacific Blue.



Distilling at Lavender Hill



Providing food for the bees and a beautiful sight to look upon, then into the 2020 harvest.



That's all from Lavender Belle



2019 Harvest

We have had the enjoyment of being able to turn some of our 2018 oil into product.

Making soaps, shampoo bars, lip balms and moisturizers.





Library News

Hi All

We have 4 new books in the Library, three of which are devoted to natural health remedies for pets and animals. We seem to have come 'full circle' in our quest for good health for ourselves and our pets. Natural and holistic therapies are enjoying a comeback as we seek to prevent illness and disease. Not surprising that Lavender features in each of the three books.

A Short History of Medicine

"Doctor I have an earache."

2000 BC: "Here eat this root"

1000 BC: "That root is heathen. Say this prayer."

1850 AD: "That prayer is superstition. Drink this potion."

1940 AD: "That potion is snake oil. Swallow this pill."

1985 AD: "That pill is ineffective. Take this antibiotic."

2000 AD: "That antibiotic has side effects. Here take this root!"

Author unknown

B084 – Holistic Aromatherapy for Animals

A Comprehensive Guide to the Use of Essential Oils & Hydrosols with Dogs, Cats, Horses and other Animals

Written by Kristen Leigh Bell. Published 2002

A comprehensive and very informative book. 216 pages packed with interesting, factual information based on scientific research and professional experience. Includes numerous recipes. An essential reference book for anyone considering animal aromatherapy.

B085 – Essential Oils for Dogs

Dog Care Safe, Natural Aromatherapy Remedies, Recipes for Canines, Puppies, Pets

Written by Angela Pierce. Published 2015

Short (31 pages), easy to read book. Provides *"simple foundational knowledge regarding the world of plant extracts, yourself and your dog"* (author)

This book touches on the benefits and possible dangers of using essential oils and contains simple home remedies to calm your dog, clean and nourish skin and coat, improve doggy breath and more. Dog owners may find this book useful but need to be **very cautious of overusing essential oils!** As the author says

"They (essential oils) are not toys, they are far more than a pretty smell, and if not treated with respect and deference, they can have serious damaging effects"



Library News

B086 – Make All Natural Pet Cleaning Products At Home

Written by Denise Clark. No publication date evident

Another short, easy to read book (66 pages). Much of the text is devoted to grooming techniques with two shampoo recipes for dogs and two recipes for cats:

Recipe 1 – Flea Shampoo

Recipe 2 – Dry Shampoo (an interesting one and worth a try)

Recipe 3 -Dry Shampoo for cats

Recipe 4 – Wet Shampoo for cats

One chapter is devoted to the benefits of coconut and olive oil for dogs.

B087 – Liquid Soapmaking

Tips, Techniques and Recipes for Creating All Manner of Liquid and Soft Soap Naturally!

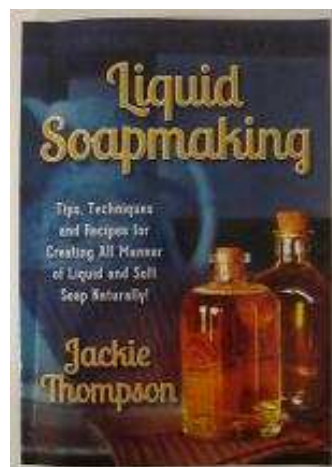
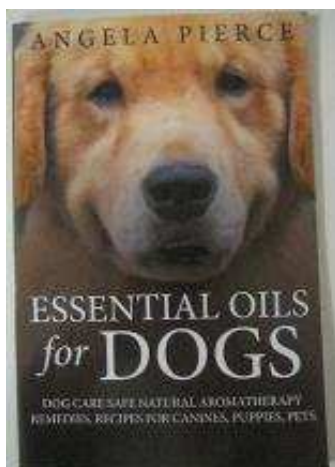
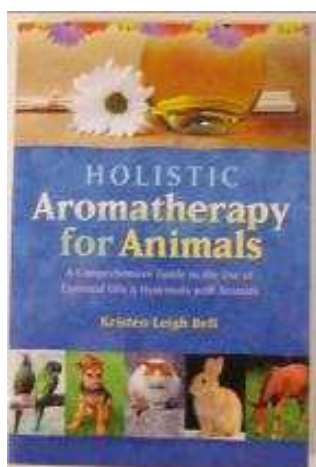
Written by Jackie Thompson. Published 2014. 2nd printing 2015

This is easily the best liquid soapmaking book I have come across. The more I read the more I want to re-search, follow the links and experiment

It is packed with scientific background information, comprehensive descriptions and instructions complete with colour photos, recipes for all manner of liquid soaps, soap gels and jellies, specialty soap – a veritable mine of valuable information. Even the appendices make a good read!

I think I will have to purchase my own copy of this book as I will be ‘dipping’ into it on a regular basis.

Pauline (Librarian)



Directory



The Soap Factory Limited

Made in New Zealand

---We are the Name behind Names.

The Soap Factory is a Biogro and GMP certified manufacturer, specialise in contract manufacturing of high quality, customised natural soap products to meet every aspect of customer requirements in a wide variety of packaging formats.

Start to build up your own Made In New Zealand soap brand, we are happy to support you with small initial runs to get you into the market.

CONTACT US

The Soap Factory Ltd.
22 Ben Lomond Crescent, Pakuranga, Auckland 2010
Tel +64 9 576 9046
E-mail sales@soapfactory.co.nz
Web www.soapfactory.co.nz



Manakau Village Nurseries

Propagation Specialists

Contact Geoff Stent for Top Quality Lavender Field Stock and Advice

- ♦ 25 years experience supplying lavender growers nationwide
- ♦ 35 years in nursery production
- ♦ Propagation to order and delivery nationwide
- ♦ Competitive pricing, free quotes, discounts for bulk orders
- ♦ Confidential, reliable service
- ♦ Suppliers of Grosso, Super, Pacific Blue, Violet Intrigue (PVR) Twinkle Purple and more
- ♦ Well-hardened stock ready for planting
- ♦ Members of NZLGA for over 10 years

MANAKAU VILLAGE NURSERIES LTD
10 Tame Porati Street ♦ RD 31 ♦ Manakau, Horowhenua
Phone 06 362 6778 ♦ Fax 06 362 6796
geoff@mvn.co.nz ♦ www.mvn.co.nz

Directory



NZ SOAP AND SKINCARE LTD

WE CAN PROVIDE ALL YOUR SOAP AND SKINCARE NEEDS
WE MANUFACTURE TO YOUR REQUIREMENTS

A WIDE VARIETY OF SIZES AND SHAPES FOR SOAPS.
HAND & BODY LOTION, BATH & SHOWER GEL, HAND CRÈME,
BUBBLE BATH, MASSAGE BALM, LIP BALM, SLEEP EASE, SHAVING SOAP,
SHAMPOO, WOOL WASH.

WE OFFER SHRINK-WRAPPING OF YOUR PRODUCTS
WE CAN ALSO DESIGN & SOURCE LABELS FOR YOUR PRODUCTS

Please feel free to contact us
Greg Cooke
Ph: 09 272 8429 Fax: 09 272 8439 E-mail: info@nzsoapandskincare.co.nz

