

TALGA NEWSLETTER

OCTOBER 2022



In this issue

- Welcome to New Members (p.1)
- TALGA Contact Details (p.1)
- Lav Data Project (p.1)
- TALGA Conference 2023 (p.2)
- Get-together in Victoria (p.3)
- News from Member Farms
 - Holmwood Farm (p. 4)
 - Glenvalley Lavender (p. 5)
 - Warratina Lavender Farm (p. 6)
 - Wendy (p.7)
- Effects of Soil Fertility (p.7)
- Book Review (p. 11)
- Buy, Swap and Sell (p.11)

➤ Welcome to a new TALGA member!

TALGA President, Gary Young, welcomes **Mark Delai** (from Tolga, Queensland) to TALGA. We trust you enjoy the benefits that we offer from industry knowledge, conferences, workshops, networking and enews.

➤ TALGA contact details

Please note the following email contact updates for TALGA

- **Public Officer/Library:** admin@talga.com.au (Fiona Glover)
- **Secretary:** secretary@talga.com.au (Kellie Oxenford)
- **News Editor:** news@talga.com.au (Karen McRae)

Please check that emails from these email addresses do not go to your spam folder. Kindly submit all enews submissions to Karen via news@talga.com.au by the 10th of each month.

➤ URGENT ATTENTION: Lav Data Project

Grower members (all producers of lavender, including fresh/ dried/ stripped flowers and/or oil) are requested to fill in the Lav Data sheets supplied by LaTrobe University as part of the Optimisation of Lavender Oil project. Funding for this project runs out at the end of the year. The website will then be handed over to TALGA to maintain. We encourage you to make use of this funding opportunity. The Lav Data forms are to be returned to Liaf@latrobe.edu.au who will update the content for TALGA on the LavData website <https://lavdata.org.au>. We have attached a copy of the database form for your convenience with your newsletter.



**Would you like to
contribute to future editions
of the monthly TALGA
newsletter by sharing an
update on your farm or sell
something?**

**NEW! Would you like to
provide an overview of
your farm for a feature on
our Facebook page?**

**We'd love to hear from you!
Email TALGA News Editor
(Karen) for more info:
news@talga.com.au**

EXPERT CONFERENCE 2023 SPEAKER PROGRAMME FOCUSED ON BUSINESS SUCCESS



During this past month we have finalised our Speaker Programme for the full day Conference on Thursday 18 May 2023 and it is looking very exciting with knowledgeable and relevant speakers on the **Five Key Elements of Business Success!**

VISION – Dee Anne Prather, Managing Director Downunder Enterprises

Our Keynote Speaker Dee Anne Prather, Managing Director, Downunder Enterprises who we introduced to you in the August ENews will speak about her experience of creating clear goals that gave focus and direction to the development of her family farm to achieve major export success. Gain insight into what you consider your own business success and answer questions like “What do I want people to say about my business?” and “What does success look like for me?”.

SINGULARITY – Clare Dean, Managing Director Tasmania Lavender Company and Port Arthur Lavender

What will make your lavender business stand out in the marketplace? We are thrilled to announce our very experienced speaker on this topic is Clare Dean, Managing Director of the Tasmania Lavender Company and Port Arthur Lavender! Her familiarity with all aspects of growing lavender, developing and value-adding products, retailing, hospitality and managing customer expectations will be especially valuable to our delegates and she is in a unique position to share some secrets to creating your distinctive lavender brand.

VALUE – Phillip Prather, President Australian Tea Tree Industry Association (ATTIA)

We are privileged to welcome Phillip Prather, President of the ATTIA (and husband of Dee Anne!) who will give an overview of the accreditation process of tea tree essential oil and the value this has brought to Australian producers. This will stimulate and inform the lavender industry discussion on the value drivers of our domestic market for essential oil and the pros and cons of introducing such a system to our collective production of lavender EO.

VISIBILITY – Nikki Barker, Monroe Marketing + Design

How do we reach our customers and get our brand noticed when there is so many visual messages bombarding us every day? Nikki Barker is a digital marketing professional working with lavender growers and producers to help improve their online presence and increase brand awareness and she will give us strategies and tools to boost the visibility of our brands. Delegates will leave this session

equipped with a worksheet to conduct an audit of their marketing tools and solid information to assist their future digital marketing plan.

PERSONALITY – Shane and Tessa McLaughlin, operators of Hillbilly Cider Company, Bilpin NSW

We are delighted to have Shane and Tessa McLaughlin as our Gala Dinner Guest Speakers as they are a dynamic couple who have built a fun and vibrant brand for their Blue Mountains grown cider apple business. They will encourage us to let our personal style and individuality shine through our products and business approach, and demonstrate that success can come with a genuine and engaging attitude.

WORKSHOP PROGRAMME DETAILS TO BE RELEASED NEXT MONTH

These five major topics form the foundation of our Conference day at The Carrington Hotel on Thursday 18 May. We also have a TALGA member Panel Discussion about Agritourism planned and some compelling workshops for the Friday Field Day at Blue Mountains Lavender Farm on 19 May and will release more details of these in next months' ENews.

We hope this terrific line up of guest speakers entice you to begin planning your Conference participation, everyone is welcome, from interested yet-to-be growers to long term experienced lavender professionals, we can all refresh and learn new lessons in a stimulating face-to-face event.

OFFICIAL CONFERENCE LAUNCH SCHEDULED FOR 1 NOVEMBER WITH DETAILS OF DELEGATE FEES AND ONLINE BOOKING SYSTEM TO BE RELEASED IN AN INDIVIDUAL EMAIL INVITATION TO ALL TALGA MEMBERS BEFORE WE OPEN BOOKINGS TO THE PUBLIC.

As always, if you have any questions about the Conference, please contact Louise Bickerton via email talgaevent00@gmail.com or mobile 0409717899.

All the best for now, Louise B

Get-together in Victoria for TALGA members

TALGA members are invited to visit **Lavandula Swiss Italian Farm** in Victoria on **Saturday 12th November 2022** between 11:30am and 2pm, and enjoy the Spring season in the delightful surroundings of this lavender farm and catch up with fellow growers.

Lunch is available in the Trattoria so please indicate if you can attend and we will put aside a table for all.

RSVP by 5th November 2022 to Fiona Glover ALR via email: admin@talga.com.au or phone: 0412 748 270

Lavandula Swiss Italian Farm
Central Vic Growers Get-together
Saturday 12th November 2022 11.30am – 2pm
350 Hepburn-Newstead Road, Shepherds Flat, Vic. 3461. Website: www.lavandula.com.au



News from Member Farms

➤ Holmwood – Queensland | Anne Young

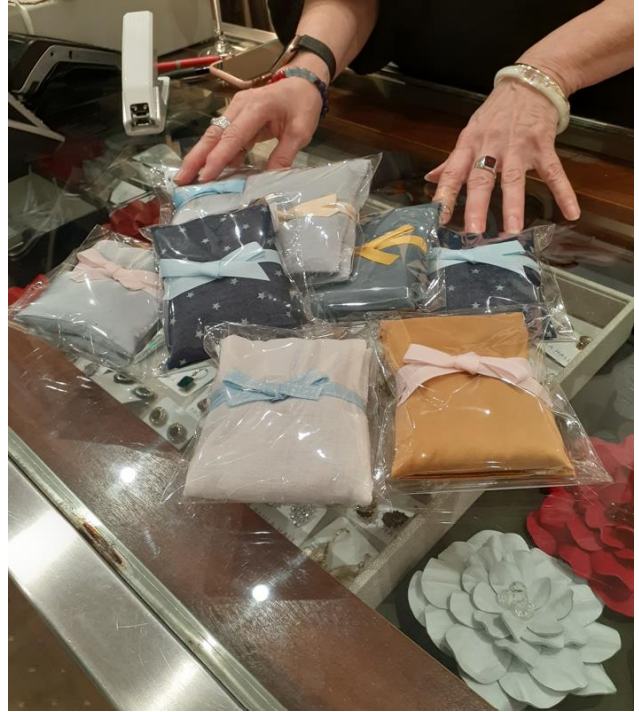
The early spring weather has been kind in our part of Queensland with showers freshening up the grounds and lavender rows.

We took part in the Laidley Spring Carnival in September, and it was a lovely sunny day with lots of visitors coming from Brisbane and the Gold Coast to the Lockyer Valley. We set up our market stall in Laidley and had a good day selling our products.

First image (right): These are the eye masks that I make to coordinate with the garments made by the Brisbane dress designer mentioned in the article.

Second image (bottom left): Julie Tengdahl, a high-end dress designer from the Brisbane Arcade, with one of her designs showing the lavender sent by Fiona to decorate the shop for Spring.

Third image (bottom right): This photo shows me (Anne Young) with the designer and one of the pieces from her collection with the matching eye masks that I make and supply to her.



I was also asked by Julie Tengdahl to supply lavender bunches to compliment the launch of her Spring collection entitled "Hope".

Fiona Glover of Creative Dried Flowers was able to send several bunches of Riverina Alan to the store and they looked and smelled beautiful in the shop.

On a seasonal basis I make and supply lavender and linseed filled eye masks for Tengdahl using fabrics that the store supplies to me from the offcuts of the garments made in their Brisbane workroom. These eye masks are given as gifts with purchase to customers in the matching fabrics to their garments.

➤ **Glenvalley Lavender – Victoria** | Cate & Neil Harper

Plenty of weeding and planting has been taking place at our farm. Once again we had a very wet winter but at least we didn't flood this time, and hopefully we won't when the next lot of heavy rain comes through.

The Lavenders are starting to wake up from their winter sleep. Lots of new green growth on most of our plants and some flowers have started to pop. Our Egerton Blue went through a tough patch with all the rain, I initially thought we had lost the lot but on closer inspection and a bit of pruning they are still alive with green stems and a few new green leaves starting to appear.

Last year we lost 98% of all our Egerton Blue so we don't want to lose them this year. We will be glad when we get a proper Spring - most of the time it still feels like winter.

My shop is looking lovely and is well stocked with quilting fabrics, crafts and lavender products. Looking forward to November when we will open the farm to visitors - at the moment just the shop is open to the public.



➤ **Warratina Lavender Farm – Victoria** | Annemarie Manders

Spring is here and the weeds are having a field day. The weather has been varied from torrential rains, hails storms and sunny days with cloudless skies. The joys of planning agricultural tasks with such variation.

Visitors to Warratina have boomed with the warmer days with visitors from India, Sri Lanka, Philippines, Malaysia, Singapore and Australia. The gardens are looking like a picture and the angustifolia lavenders are producing their new spring foliage.

As we are only 1 hour drive from Melbourne, the drive to Warratina is only one hour and encourages visitors to not only enjoy our gardens, but also enjoy the tasty cuisine from the Tea House, purchase some lavender products and then continue to other exciting venues in the Yarra Valley. We are always prepared to promote other destinations within our tourism networking.

Upcoming events for October and November 2022:

- Art Show: 8th-16th Oct 10-4 by Mt Evelyn & Yarra Valley Art Society
- Dog Day: 23rd Oct. demonstrations, grooming, obedience, agility, photography, stalls. Ticketed event
- Lavender Festival: 19th-20th Nov: entertainment, dancing, pipe bands, stalls, food. Ticketed event
- Lavender Season: 23rd Nov-15th Jan: talks, homestead open garden, lavender fields, lavender ice-cream. Ticketed season.



LAVENDER HARVEST FESTIVAL
Saturday 19th + Sunday 20th November 2022
Two Sessions Each Day: Morning: 9am - 1pm | Afternoon: 1pm - 5pm

Join Warratina Lavender Farm for their annual Lavender Harvest Festival this November, which celebrates the start of the lavender season. Enjoy a stroll through rows of blooming lavender and homestead gardens. At the festival you will be able to enjoy live music, craft demonstrations, lavender talks, a local market and much more.

Book your tickets by visiting www.warratinalavender.com.au or at our gift shop on the day of your visit.

Adults (12 years +): \$15.00
Children (aged 4 - 11): \$5.00
Infants (3 and below): Free



105 Quayle Rd, Wandin Yallock | 03 5964 4650



WARRATINA'S DOG DAY
Sunday 23rd October 9:00am - 5:00pm

Get ready for a day all about dogs at our upcoming Dog Day. Expect a wide range of dog demonstrations including agility, tricks, dancing and fly ball.

We will have lots of fun competitions for your fur baby to enter such as Best In Show and Best Dressed.

Treat your pooch to something paw-fect from our doggy market with over 20 specialised dog stalls. If you want to pamper your pup further, there will be a groomer on site offering mini grooming sessions!

Book your tickets by visiting www.warratinalavender.com.au or at our gift shop on the day of your visit.

Adults: \$10.00 | Children: Free | Dogs: Free

105 Quayle Rd, Wandin North
03 5964 4650 or 0417 589 231
www.warratinalavender.com.au

WARRATINA
lavender farm



➤ **Pinelea Lavender – NSW** | Wendy Fuller

Wendy Fuller made fifty souvenir cards to sell to the excited bike race spectators in Wollongong.

Wollongong hosted the 2022 UCI Road World Championships (18-25 September 2022) and did a magnificent job. The races were contested over a week while the weather stayed mostly fine. Spectators, riders, volunteers, officials kids, dogs, all had a wonderful time.

Our home was right on a corner that was part of the main route. We had a great view and all the cards sold, thanks to my daughter and her young son. The big wheel contained "Pinelea" lavender.

Happiness all around!



Effects Of Soil Fertility – Soil Is The Key To Plant Health

By Curtis Swift, Ph.D., Mesa Lavender Farms, Grand Junction, CO (Lavender Association of Colorado, 2022 Issue IV).

Soils are an integral component of nutrient availability. One cannot discuss nutrient requirements of lavender without considering how the soil environment influences the movement and uptake of nutrients from soil to the plant.

Soil drainage is key

Proper drainage ensures the root system has adequate oxygen, low carbon dioxide levels, and appropriate nutrient uptake. With plants, drainage means how well water moves into and down through the soil profile. As this occurs, it pulls air into the soil providing oxygen to microbes and plant roots. This drainage occurs due to the spaces between the soil particles. When of the proper size and open to the soil surface, these spaces allow carbon dioxide to escape. The sizing of the spaces in between the soil particles is also critical as small pore sizes restrict drainage. Testing the soil for drainage prior to planting is important to determine when soil amendments are necessary. Soil preparation, if done improperly, can pulverize soil resulting in poor drainage.

Carbon dioxide is produced by roots and microbes. When carbon dioxide levels increase in the soil, roots become more susceptible to root diseases such as Phytophthora, a major killer of lavender plants. An increase in carbon dioxide further causes problems by shutting down the symbiotic mycorrhiza fungi and increases formation of suberin in the walls of plant cells which restricts the flow of water and nutrients from the soil into the roots.

The symbiotic mycorrhizal fungi protect the roots from invasion by root pathogens and increase the uptake of water and some nutrients required by the plant. As soil oxygen levels drop, the beneficial effect of the mycorrhiza is limited. Low soil oxygen levels affect other beneficial and root protective microbes in addition to mycorrhiza.

The oxygen level in the soil is also critical for the development of root hairs. These are protrusion from root cells which extend into the soil responsible for increasing water and nutrient uptake.

Proper soil preparation, planting on mounds to increase drainage, and proper irrigation scheduling are all critical to soil oxygen levels. Landscape fabrics and mulches also impact soil oxygen/carbon dioxide levels. All these factors must be considered when dealing with root rot pathogens. These factors directly affect nutrient uptake by the plant.

Proper soil drainage also helps correct soluble salt problems by leaching salts below the root zone. However, the success of this is dependent on whether you have a hard pan or water table within three feet of the soil surface. This must be determined during the soil preparation process. A soil test will help determine if soluble salts are a problem.

Soluble salts dehydrate the roots, kill mycorrhiza and other beneficial microbes, and root hairs. The reduction in water and nutrient root absorption, and increase plant stress can lead to the possibility of disease. While lavender can tolerate some soluble salts, it can only tolerate so much stress. Testing soil and irrigation water for soluble salts is very important. A water analysis will also inform the grower of the amount of nutrients provided by the irrigation water.

A soil and water analysis will help the grower adjust the soil to a pH preferable to lavender, 6.5 to 7.5. A soil pH level above 8 can indicate a sodium problem while a pH below 6.5 should be increased. Incorrect pH levels directly affect nutrient availability and uptake. Special steps must be taken to correct these issues prior to planting.

Phosphorus: a major plant nutrient

One of the nutrients mycorrhizae provide to the root system is phosphorus. Phosphorus is critical to plant health as it is involved in energy transfer, photosynthesis, carbohydrates production, nutrient movement within the plant, and gene transfer among other processes. When mycorrhiza is restricted, phosphorus availability drops. Lavender requires a healthy mycorrhiza community on its roots.

When soil oxygen levels are deficient, the lack of plant phosphorus due to the mycorrhizae shutting down cannot be corrected by adding more phosphorus. In addition, too high a level of phosphorus turns mycorrhizae from a beneficial organism to a parasite. Mycorrhizae taps the plant roots for carbohydrates in exchange for protecting the roots from parasites and transferring water and nutrients from the soil to the roots. When phosphorus levels are excessive mycorrhiza continues to remove carbohydrates from the plant without providing the plant what it needs to produce carbohydrates. This weakens the root system increasing its susceptibility to root pathogens.

Testing the soil to determine its phosphorus level is critical. Available phosphorus levels of about 90 ppm based on the AB-DPTA extraction technique is recommended. Not all soil testing labs use this extraction method thus their figures need to be converted to AB-DPTA to be useful.

If the soil test shows phosphorus is needed, it is best applied in the fall prior to planting to allow bacteria to do their job. Soil phosphorus exists in different forms in soil some of which are not available to plants until converted into a plant-available form by microbes. Microbes need oxygen to do this conversion, another reason why soil oxygen levels are critical. Soil organic matter also is critical to feed the microbes responsible for plant-available phosphorus and other nutrients.



Adding phosphorus after planting is difficult. Phosphorus, like potassium, is very immobile in soil. When applied to the surface, these nutrients may take years to move to a depth where the majority of the roots are located. For that reason, phosphorus and potassium need to be blended into the soil prior to planting.

An exception is when the soil is mostly sand. Sandy soil may need phosphorus applications on a yearly basis to overcome their phosphorus deficiency. Proper soil amendments with organic matter can help correct this problem as it helps prevent leaching of phosphorus below the root system in these soils.

Growers using a drip irrigation system for fertigation can have difficulty when trying to correct low soil phosphorus levels after planting. Some forms of phosphorus, when in contact with other nutrients in

the irrigation water will precipitate out in the drip tubing plugging the emitters. Hence the reason for applying phosphorus during the soil preparation phase prior to planting.

Nitrogen

This nutrient is the cornerstone of the photosynthetic process which produces the carbohydrates necessary to maintain healthy roots, mycorrhiza, other microbes, leaves, stems and floral stems. Lavender growers who don't apply nitrogen fertilizer to their fields, whether synthetic or organic, are reducing the yield and health of their plants. There are instances when nitrogen may not be needed if the field is in an area with frequent occurrences of lightening, or with high organic soils.

For new plantings, adequate soil nitrogen is necessary at planting for good root growth and establishment. Nitrogen can be surface applied and watered in or applied via a drip system once you know what amount of nitrogen you need to apply. When compared with phosphorus and potassium, nitrogen is very mobile in soil and easily leached below the root zone. For this reason, nitrogen may need to be applied yearly.

Too much soil nitrogen can increase insect infestations in some plants (seldom a problem with lavender) and increase vegetative growth over floral production. Hence the reason for not applying nitrogen until after the first harvest of the season. Applying nitrogen too late in the season can stimulate succulent growth and reduce winter hardiness. The chlorophyll molecule consists of four nitrogen atoms surrounding a magnesium atom, making nitrogen a critical nutrient necessary for the absorption of light to provide energy for photosynthesis. Without an adequate level of chlorophyll, the plant will have problems with water and nutrient uptake, root development, and development of mycorrhizae, etc.

A soil test is necessary to determine the level of nitrogen you have available for plant growth. Some labs will not do a nitrogen test, so you need to be selective when choosing a testing laboratory for your soil samples.

A nitrate nitrogen level of 40 to 45 ppm is a great level for a lavender field. You may need to fertilize yearly to maintain this level. Remember not to apply an excessive amount and apply it at the proper time.

Potassium

Potassium, like phosphorus and nitrogen is a major nutrient required for plant growth. Potassium is necessary for the movement of water, nutrients and carbohydrates in plant tissue among other activities. While many soils contain an adequate or abundant supply of potassium, a soil test should test for this nutrient to ensure it is in adequate supply. Even though excessive levels have little effect on the health of lavender there is no need to apply more than necessary.

Other soil nutrients



Potassium, calcium, iron, magnesium, sulfur, and other nutrients are also needed for proper plant health. An excess of any one of these can result in tying up the availability of others. Therefore, a soil test showing if these are adequate or excessive is critical. If any are low, they can be corrected prior to or after planting depending on the nutrient. If the soil test shows the nutrient is excessive, while there is little you can do to reduce the nutrients, you can at least not cause more problems by using products that contribute to the problem.

The nutrient and soluble salt content of organic fertilizers and soil amendments must be taken into account when making decisions on what to apply. This may mean testing manures and compost you use as amendments or mulches. Synthetic fertilizers are rated with a salt index. Selecting the synthetic fertilizer with the lowest salt index is recommended.

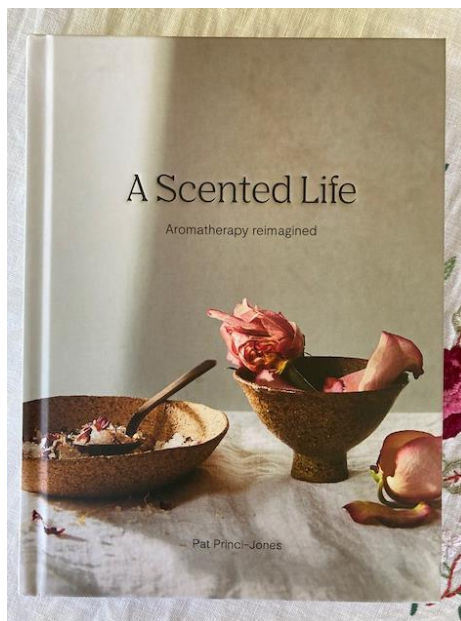
Based on this short discussion, one should remember the following:

1. Lavender is a long-term agricultural crop, and the lavender grower should spend the time to determine issues which can affect the crop prior to planting. Neglecting the following issues will likely have a direct impact on nutrient uptake, development of mycorrhizae, susceptibility to plant pathogens, and yield. These issues include:
 - Drainage issues and soil amendments
 - Soil oxygen levels
 - Nutrient availability and applicationsHow to calculate nutrient applications
2. A soil test is critical prior to planting and during the years afterward.
3. Selecting the proper soil testing lab and analysis is an important consideration to your success as a lavender grower.

Book review

'A Scented Life – Aromatherapy reimagined' by Pat Princi-Jones. A beautiful book for the coffee table or for reference. Practical hands on use of essential oils and a joy to read. Pat Princi-Jones is a Melbourne based aromatherapy advocate and specialist. She is an associate member of IAAMA and is committed to upholding the principles of safe practice in this fast-growing natural therapy.

- By Kellie Oxenford (Leven K Lavender, QLD)



Buy, swap, sell!

➤ **Sentimental Collection products at reduced prices!**

Lavender Castile Hand & Body Wash Refill 500ml

TALGA members current discounted price: \$6.00 including gst postage (40% discount)

This exciting versatile hand & body wash is made with 100% pure virgin olive oil with the addition of lavender essential oil to complement its extraordinary qualities and add fragrance.

Traditionally made in Spain's Castile region and now manufactured using pure virgin olive oil grown and pressed right here in Australia. It is free of animal fats, chemicals and synthetic ingredients. As well as being natural, non-toxic and biodegradable, it is less likely for someone to have an allergic reaction to the simple ingredients in TALGA's lavender Castile



+

Hand & Body Wash, compared with cleansers containing more complex or synthetic ingredients. Read more on the TALGA website [here](#).

Lavender Castile Hand & Body Wash 250ml

TALGA member current discounted price: \$4.20 including gst + postage (40% discount)

This exciting versatile hand & body wash is made with 100% pure virgin olive oil with the addition of lavender essential oil to complement its extraordinary qualities and add fragrance. Traditionally made in Spain's Castile region and now manufactured using pure virgin olive oil grown and pressed right here in Australia.

It is free of animal fats, chemicals and synthetic ingredients. As well as being natural, non-toxic and biodegradable, it is less likely for someone to have an allergic reaction to the simple ingredients in TALGA's lavender Castile Hand & Body Wash, compared with cleansers containing more complex or synthetic ingredients. Read more on the TALGA website [here](#).



Scentimental Collection Lavender Soap 100g

TALGA member current discounted price: \$2.95 including gst + postage

This delicate fine lavender soap, is presented in a lovely box making this the perfect gift.

Quality skin care made from Australian grown lavender.

Proudly made in Australia with the finest quality Australian grown lavender essential oil. Read more on the TALGA website [here](#).



➤ FOR SALE: Book

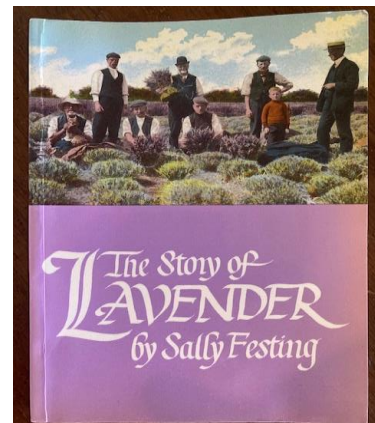
'The Story of Lavender' by Sally Festing.

Secondhand – a great little history of Lavender.

Price: \$20 + postage

Contact person: Kellie | LevenK Lavender, QLD

Phone number: 042 760 9171





Yarra Valley

Spring
2022

Plant Fair

Meet the experts

& Garden Expo

Angus Stewart
Sat & Sun



Jane Edmanson
Sunday

Vasili
Sat & Sun



November 5 & 6



125 Quayle Rd, Wandin

45 + vendors selling over 1000 varieties



Discounted
tickets
online

Free parking* Dogs welcome* Demonstrations

www.yarravalleyplantfair.com.au

